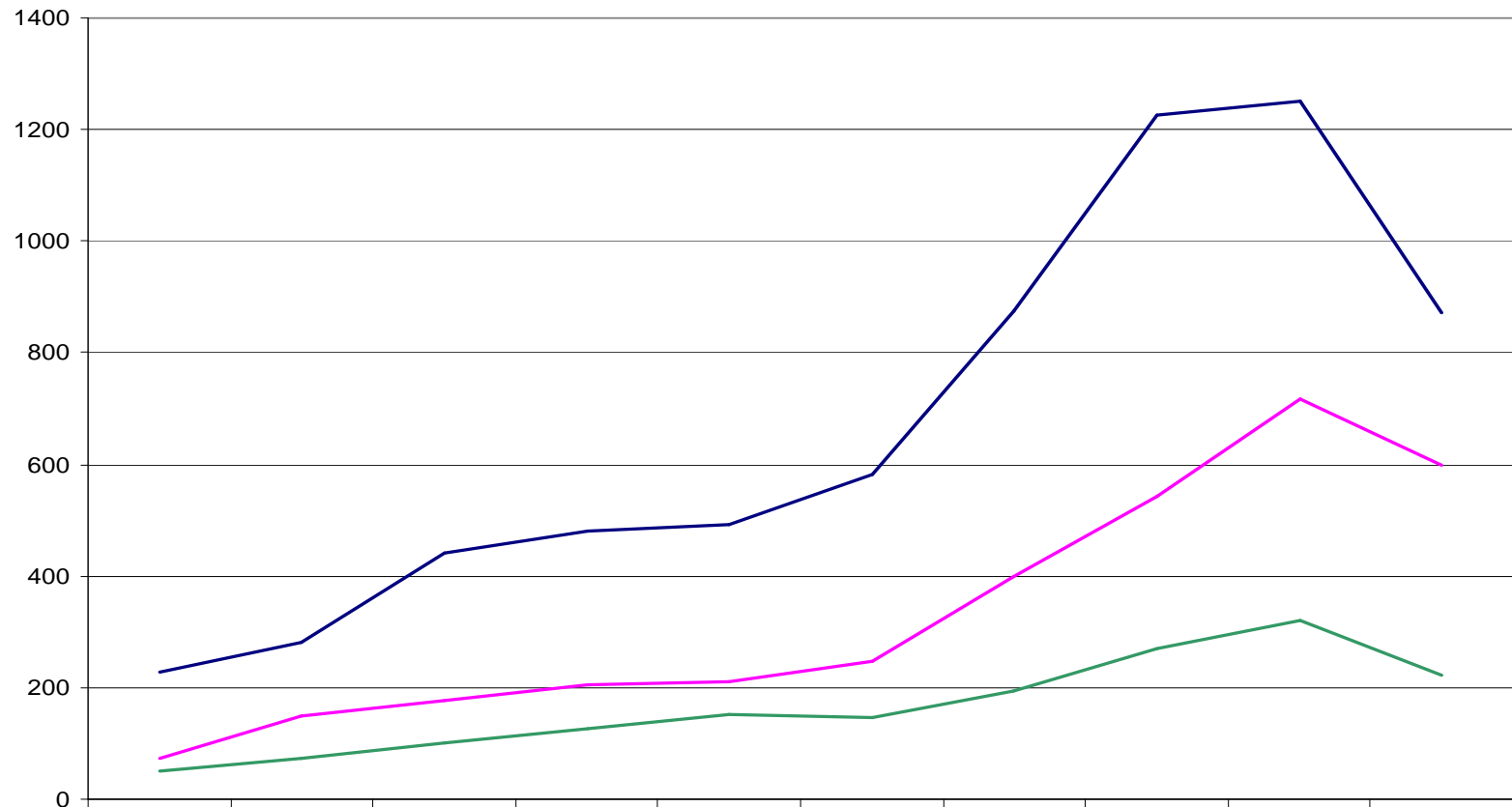


Foreclosures Over Time



	2000	2001	2002	2003	2004	2005	2006	2007	2008	2009
— Jackson	228	282	442	481	491	582	874	1227	1252	872
— Lenawee	72	150	176	205	210	246	400	543	716	600
— Hillsdale	50	72	102	127	153	147	194	269	321	222

— Jackson — Lenawee — Hillsdale